

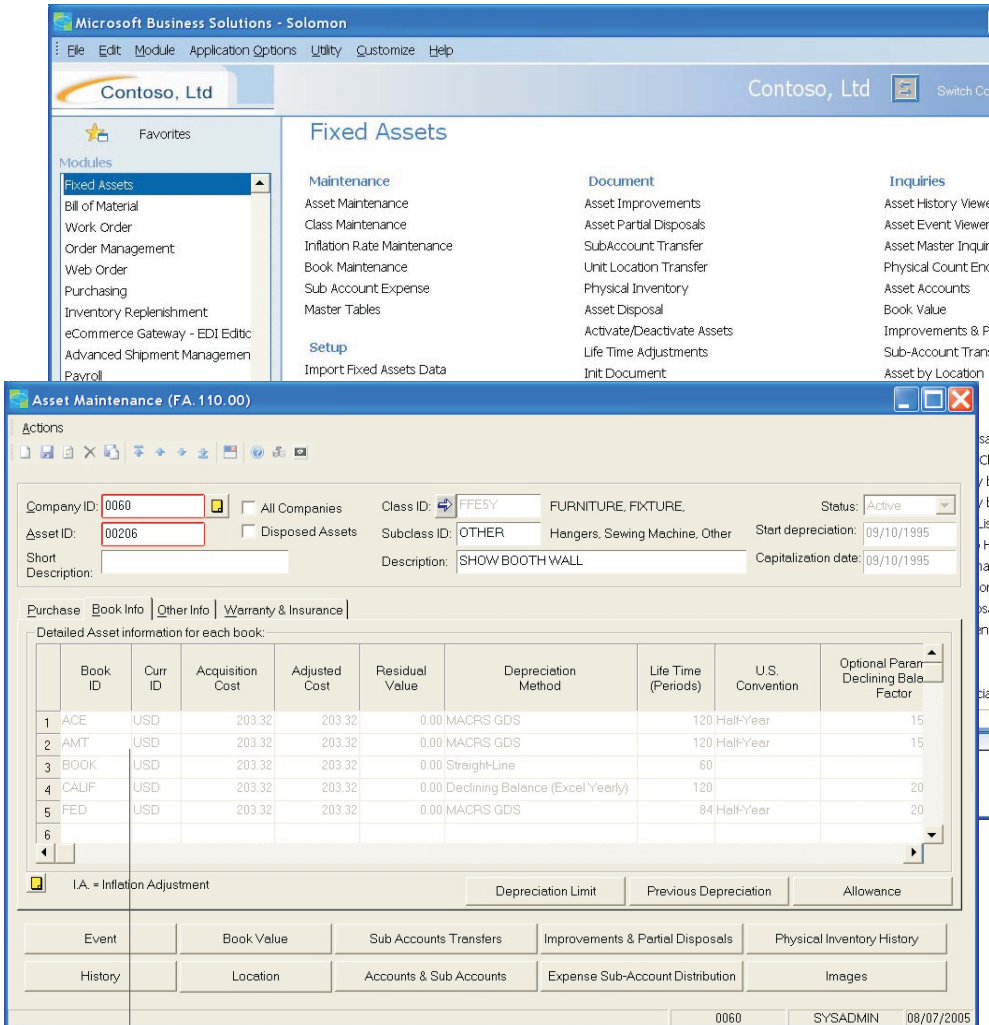
Fixed Assets

Financial Management—Solomon

Cibermaxima Fixed Asset for Solomon expands on the core Microsoft Business Solutions—Solomon Financials module with a sophisticated register specifically for asset management. Since it is connected to the General Ledger, Accounts Receivable, Sales Orders, Accounts Payable, Purchase Orders and Inventory, the Fixed Assets module eliminates any need for duplication. A number of otherwise labor intensive tasks are easily automated. What's more, the module streamlines tasks such as year-end reporting.

B E N E F I T S

FIXED ASSETS MODULE



Increase

data entry effectiveness
Fixed Assets for Solomon helps you forecast, monitor and control your fixed assets throughout their entire life cycle.

Seamless Solomon Integration

Cibermaxima's Fixed Assets is seamlessly integrated with Solomon's General Ledger, Accounts Payables, Purchasing, Project Controller, Currency Manager, Financial Statement Translation and System Manager Modules. It adapts to Multi-Company, Multicurrency, Multi-Book and Multi-Ledger environments.

100% Microsoft Solomon developed.

The most powerful customizing capabilities. This module is written in Visual Basic using Solomon's VB Tools; therefore it inherits all the technological advantages associated with Solomon.

Business Intelligence built in. (OLAP)

Cibermaxima's Fixed Assets module comes with built in Microsoft Excel integration. Just a few clicks create custom management information reports, in MS Excel, using pivot tables and OLAP (On Line Analytical Processing) Technology. Management and users in general will be able to interpret and take control of Fixed Asset information without additional training, using their favorite tool: MS Excel.

Designed for the way YOU do business.

Cibermaxima's Fixed Assets module answers an organization's real world and Fixed Asset management needs. Documents for any asset adjustment allowing for total traceability, cycle defined physical counts, depreciation expense distributions across sub-accounts, purchasing and account payable integration, amongst many other features

Totally compliant with US Fiscal Law - IRS

Fixed Assets has customizable IRS asset classes, with corresponding IRS depreciation methods. Reports that help with IRS reporting are also provided. Deductions in Section 179, Liberty Zone, and unlimited custom deductions. Multiple depreciation schedules and methods including, MACRS ADS and MACRS GDS with corresponding conventions.

Windows Mobile 2003 and Barcode.

CFA has the most comprehensive functionality for asset inventory tracking, monitoring and reconciliation, performing physical counts using a handheld device and Windows Mobile 2003, with bar code reader installed.

AVAILABLE WITH: Solomon (Premier)
 Solomon Standard

MICROSOFT BUSINESS SOLUTIONS—SOLOMON

FIXED ASSETS MODULE | FEATURES AND FUNCTIONALITY

<p>Adapts to the way you do business, customizable, easy to deploy.</p>	<p>CFA is developed with Solomon's VBTools, from which it derives the most powerful customizing capabilities on the market. It has the ability to add/change/hide fields, screens and add functionality using Visual Basic for Applications, Object model compatibility, etc. We recognize that "it is not the strongest of the species that survives, but the most adaptable". Business rules constantly change and CFA evolves with them. CFA adapts to you.</p>
<p>Protects your fixed asset investment, allowing total control and management over your</p>	<p>Cibermaxima's Fixed Assets module has the most advanced auditing and control features. Every disposal, addition, partial disposal, transfer between locations, sub-accounts or companies, requires a document, and the system records the Solomon user that creates or modifies the transaction. CFA also has scheduled physical counts, which can be defined by location, sub-account or by asset class. Physical counts can be performed using handheld recorders and barcodes, and then they are all reconciled in the system.</p>
<p>The most comprehensive set of features in a Fixed Assets Module</p>	<p>Seamless Solomon Integration, Manager Enabled Customizing, Physical Inventory, Bar Code and Windows Mobile 2003 support, Multi-company with Inter-Company transfers, Multi-Currency, Multi-Book, Imaging for Fixed Assets, amongst many other features.</p>
<p>Integrated acquisition process</p>	<p>Asset acquisitions are controlled by a search engine that will detect any acquisition made in AP, Purchasing, Project Controller or GL Directly.</p>
<p>Multiple depreciation schedules and methods</p>	<p>Straight Line, Declining Balance, Converted Declining Balance, Sum of Digits, Production Units, Custom, Straight Line with Mid Year, and tables based on MACRS ADS and MACRS GDS with Half-Year, Mid-Month and Mid-Quarter conventions.</p>
<p>Pre-configured IRS asset classes and IRS Tables</p>	<p>Reports that help with IRS reporting are also provided. Deductions in Section 179, Liberty Zone, and unlimited custom deductions are supported. Tables based on IRS depreciation methods such as MACRS ADS and MACRS with Half-Year, Mid-Month and Mid-Quarter conventions.</p>
<p>Multi-books and Multi-Currency.</p>	<p>A single screen accesses Assets from many books. You can create as many books as needed for actual ledger - GAAP, multiple state tax, federal tax, multicurrency books, alternate scenarios analysis, budgeting, etc.</p>
<p>Fixed Asset Master and Asset Class.</p>	<p>The maintenance screen provides a rich set of fields including user defined fields, and history of Assets. Asset Classes and sub-classes provide default configuration for Assets in general within each book, permitting better reporting and OLAP analysis.</p>
<p>Fixed Asset Imaging</p>	<p>Unlimited pictures (Images), and acquisition documents, - Invoices - can be stored for each Asset, acquiring the optional imaging module.</p>
<p>Mass data changes to assets.</p>	<p>You can adjust documents such as Asset Disposals, Transfers, Improvements, Partial Disposals, Sub account and Location Transfers and Inter-Company Transfers. The changes to these documents will be automatically posted to GL. Documents provide a full audit trail, and all history is retained.</p>
<p>Asset history detail.</p>	<p>Asset history can be tracked throughout all its useful life, taking into account Net Asset Value, Accumulated Depreciation, Transfers, Improvements, Asset disposal details from the functional stand point including the debits and credits that correspond to each operation.</p>
<p>Crystal Reports™ though Solomon's ROI</p>	<p>An industry standard report writer. This allows customizing or developing new reports. Your staff won't have to learn another report writer.</p>